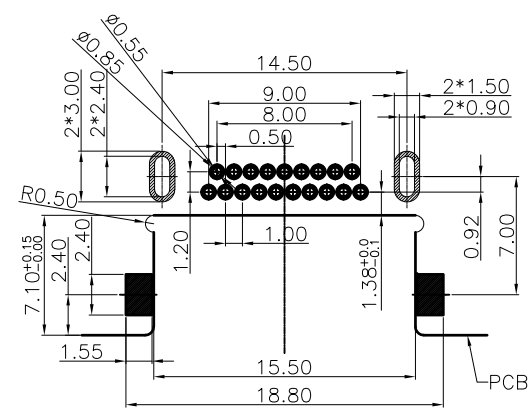
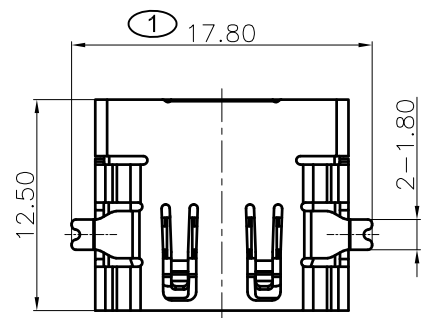


1 2 3 4 5 6 7 8 9

A



RECOMMEND PCB LAYOUT
TOLERANCE: ±0.01

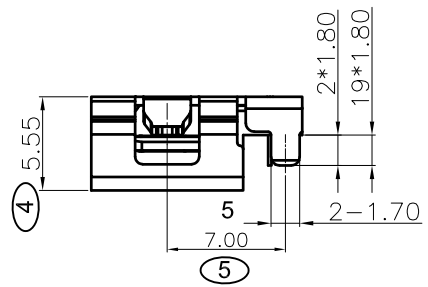
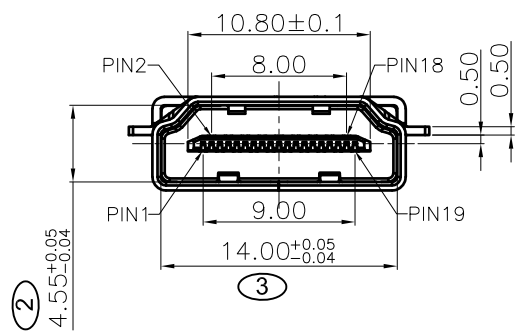
SPECIFICATIONS:

1. ELECTRICAL CHARACTERISTICS
 - 1-1. CURRENT RATING: 0.5 AMP
 - 1-2. VOLTAGE RATING: 40 V
 - 1-3. CONTACT RESISTANCE: 30MILLIOHMS MAX
 - 1-4. INSULATION RESISTANCE: 100M MIN. @ 500V DC
 - 1-5. DIELECTRIC WITHSTANDING VOLTAGE: 500V AC FOR 1 MINUTE
2. MECHANICAL CHARACTERISTICS:
 - 2-1. INSERTION FORCE : 4.5KGF MAX.
 - 2-2. WITHDRAWING FORCE : 1KGF ~ 4KGF.
3. LIFE TEST: 10000 CYCLES
4. OPERATING TEMPERATURE: -25°C TO +85°C

※ SIGN "⊗" IS IMPORTANCE DIMENSION

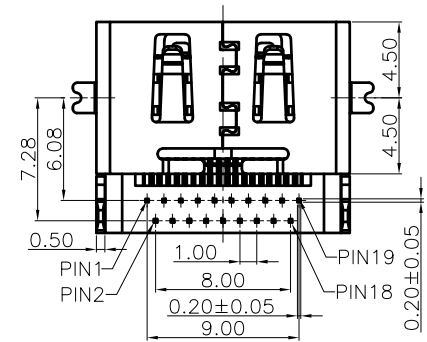
B

C



D

E



C	SHELL	1	C2680R-H Ni T=0.5MM, 50u"MIN.NICEL ALL OVER
B	TERMINAL	19	C2680R-H SEE PART NO.
A	HOUSING	1	LCP E130i UL94V-0 BLACK
NO	PART NAME	QTY	MATERIAL PLATING & COLOR

F

KEM 奇速科技有限公司

Qi-Speed Technology CO., LTD.

單位: mm		繪圖	設計	審核	核准	產品名稱: PRODUCT NAME HDMI反向沉板式銅壳鍍銀 兩SMT脚兩直脚四反 彈片 壳厚0.5 脚長1.8 針長1.8 端子間距1.2 端子 半金亮錫1u"
比例:		DRAWING	DESIGNED	CHECKED BY	APPROVAL BY	料號:KHD17-11011142 PART NUMBER
公差: .X ±0.38 .XX ±0.30 .XXX ±0.15		JOHNY	JOHNY	LUKE	JAMES	圖號:KHD17-11011142-1 DRAWING NO
日期: 2010/6/7						版本: REV. 2

REV.2	外殼改0.5厚 塑膠端子改變	2021/3/25
REV.1	增加分端端子零件	2020/11/18
版本	修改事項	修改日期

1 2 3 4 5 6 7 8 9